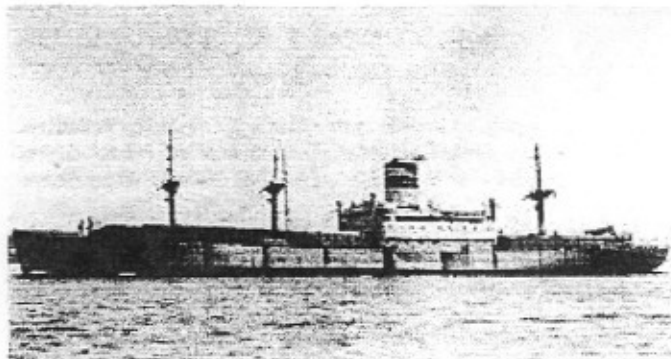


SS Alcoa Pioneer

Company: Alcoa Steamship Co. New York, NY
Master: Andrew W. Gavin
Gross Tons: 6759

Home Port: New York, NY

Built: 1941 @ Richmond, CA
Dimensions: 397' x 60' x 35'



At 2310 GCT, a plane came at the ship from dead astern without deviating from its course and crashed on the port side of the flying bridge destroying the steering station, the #2 gun tub, the stack, #2 lifeboat, and the cabins of the Radio

The Freighter, SS ALCOA PIONEER, was struck by a Japanese suicide plane at 2310 GCT on November 18, 1944 while anchored in San Pedro Bay, Leyte, P.I. She had left San Francisco on September 9 stopping at Pearl Harbor, Eniwetok, Manus, and Hollandia before arriving at Leyte on November 5. Her complement was 43 merchant crew and 29 Naval Armed Guard. Five Navy men were killed and 9 injured. Five of the ship's crew were also injured but all survived. Photo courtesy of Mariners Museum, Newport News, VA.

Operator and the Chief Mate. The bridge and forward of the midship house burst into flames when the plane's gas tank exploded. Fire hoses were manned and the fire brought under control.

The ship was not abandoned but the seriously injured were transferred to the USS PCE-851.

The ship later sailed for San Francisco but on December 14 she broke down south of Guadalcanal and had to be towed to Espiritu Santo by the Navy tug ATR-33, arriving there December

20. She remained there until January 2, 1945 when she sailed for San Francisco arriving there February 7, 1945 having stopped at Pearl Harbor on January 23-24.

Request support from support@: